

Webpavement Digital Signage Tickers and Side Info Panel



Installing the Webpavement Software 3
Adding Your Local Sign Host Media Player 4
Setting Tickers: The Webpavement Ticker 7
Setting a Side Bar (aka. Infopanel) 10

Installing the Webpavement Software

If you use a single computer for the evaluation, then you will run the test as a stand alone system.

If you use two computers for the evaluation, then you will run the test as a remotely managed system.

This guide is valid for both configurations.

1. Stand Alone System:

Your Windows account must have administrator privileges

Install Sign Administrator and Sign Host on the same XP computer. You will need to become familiar with toggling.

Toggling: the sign host starts fullscreen. To minimize the screen, use the "Esc" key - To maximize the screen, use the "Esc" key.

Tip: Click in the content window for the Esc key to function - even if the mouse key is not visible.

2. Remotely Managed System:

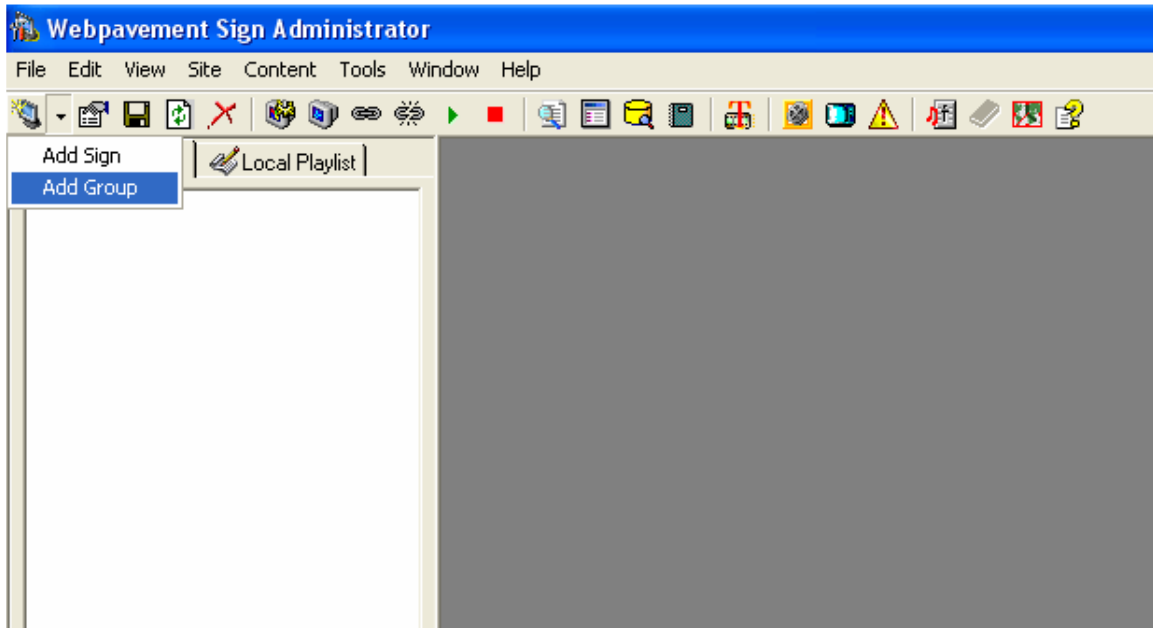
Your Windows account must have administrator privileges

Install Sign Administrator on the operator's XP computer. Install Sign Host on a dedicated XP computer attached to the digital sign display.

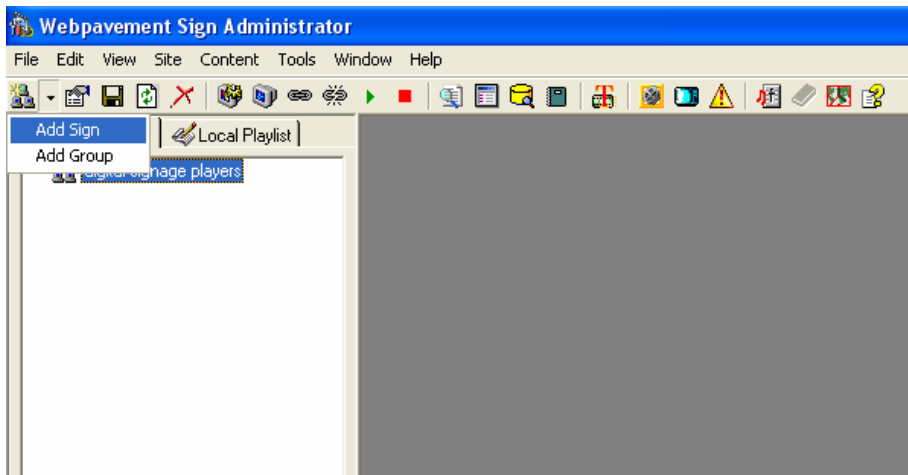
*Evaluation Notes: reboot after installing the Sign Host software. When the software starts, you can click the **evaluate** button for your free 30-day trial.*

Adding Your Local Sign Host Media Player


1. Open the Sign Administrator program
2. From the signage icon at top left, click the arrow down button,
 - a. "Add Group"
 - b. Provide a logical name such as "digital signage"



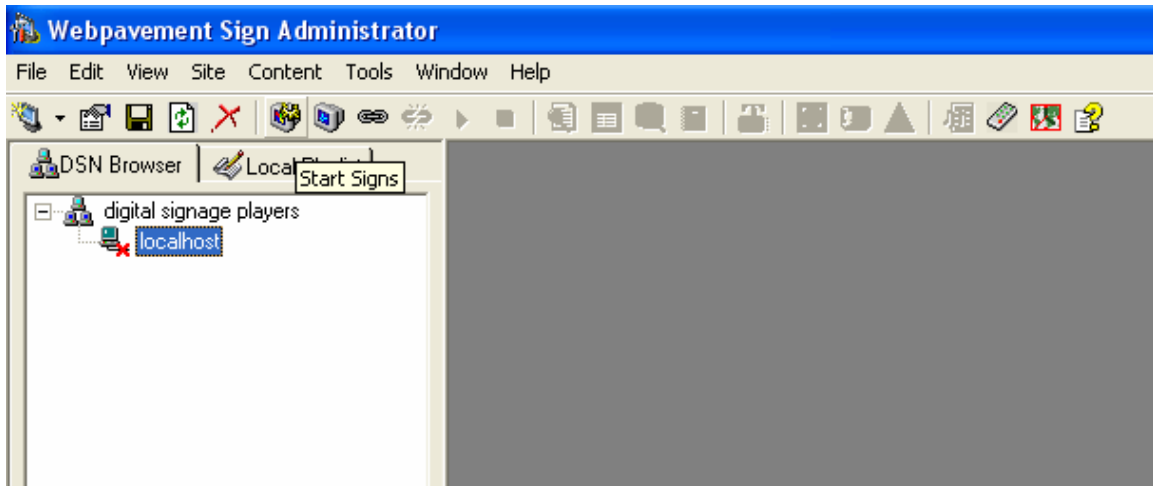
3. From the signage icon at top left, click the arrow down button,
 - a. "Add Sign"
 - b. Provide a logical name, for example "Lobby Sign"
 - c. Enter the TCP/IP address or computer name of the Sign Host computer. Use "localhost" if running in a stand-alone configuration



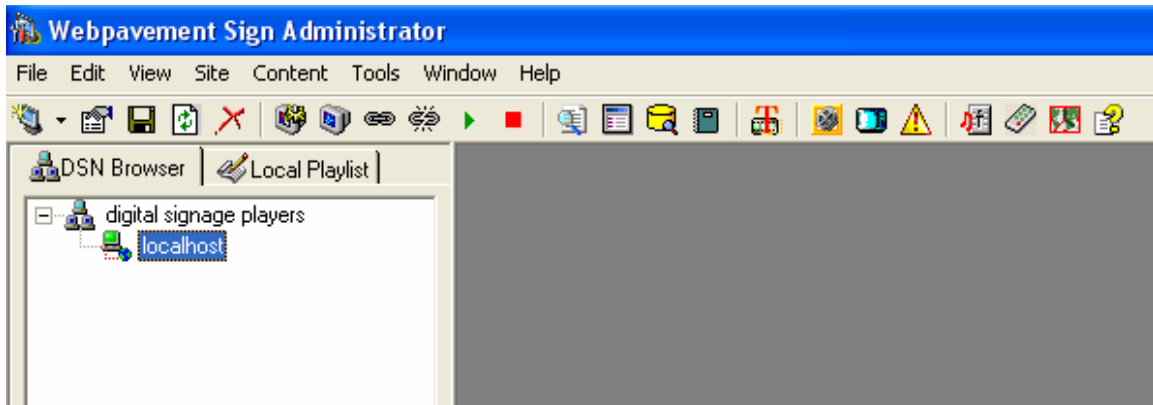
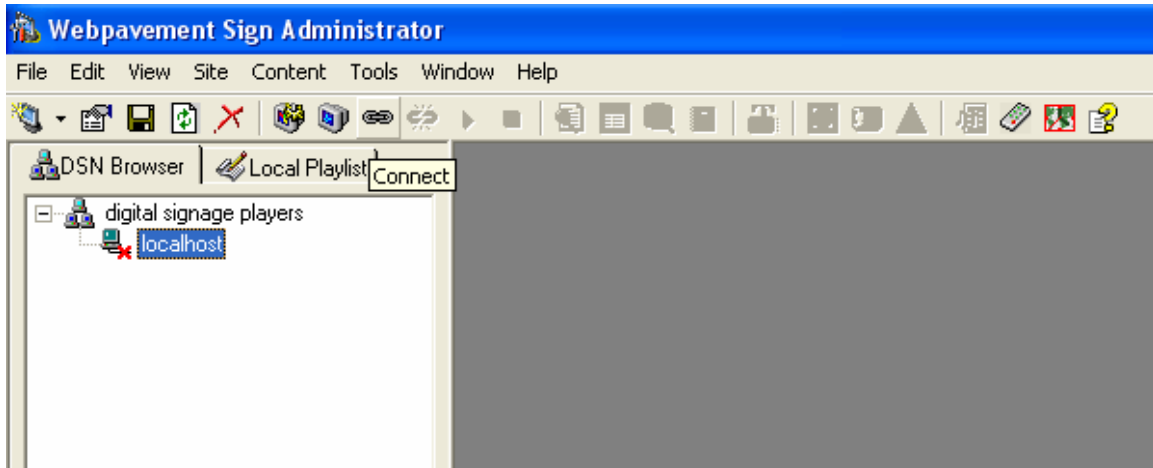


4. Now you can startup the sign by clicking the start signs icon 

Tip: the sign host starts fullscreen. To minimize the screen, click in the sign host window then use the "Esc" key - To maximize the screen, use the "Esc" key.



5. Connect to the sign by clicking this icon 



6. Now all the features from sign administrator are available because you're connected to the sign.




Setting Tickers: The Webpavement Ticker

The ticker is a very powerful tool for displaying a ticker on your public display. You can customize the ticker to have your own look and feel.

- ❑ **Stock market information:** current Dow Jones, Nasdaq and S&P market summaries, individual stock quotes and most actives can be displayed.
- ❑ **Weather:** current local weather information can be displayed. Current conditions and extended forecasts are available by zip code.
- ❑ **Custom messages:** Your text information can be displayed on the ticker. This is commonly used to display your daily event information or promotions. External data can also be scrolled!
- ❑ **RSS Support:** Scroll your favorite RSS feeds.
- ❑ **Time & Date:** current time and date are displayed in the summary section of the ticker.
- ❑ **Sponsor Logo:** used as a message separator and brand a company logo on the ticker.

Important: the ticker requires an internet connection.

Start Ticker:

Select a sign  [sign name] or a sign group  [group name]
Connect to the sign or sign group by clicking the connect icon 




Click the ticker management icon 

Choose your ticker settings

Next click preview button (optional step)

Click Apply - this will send the new ticker settings

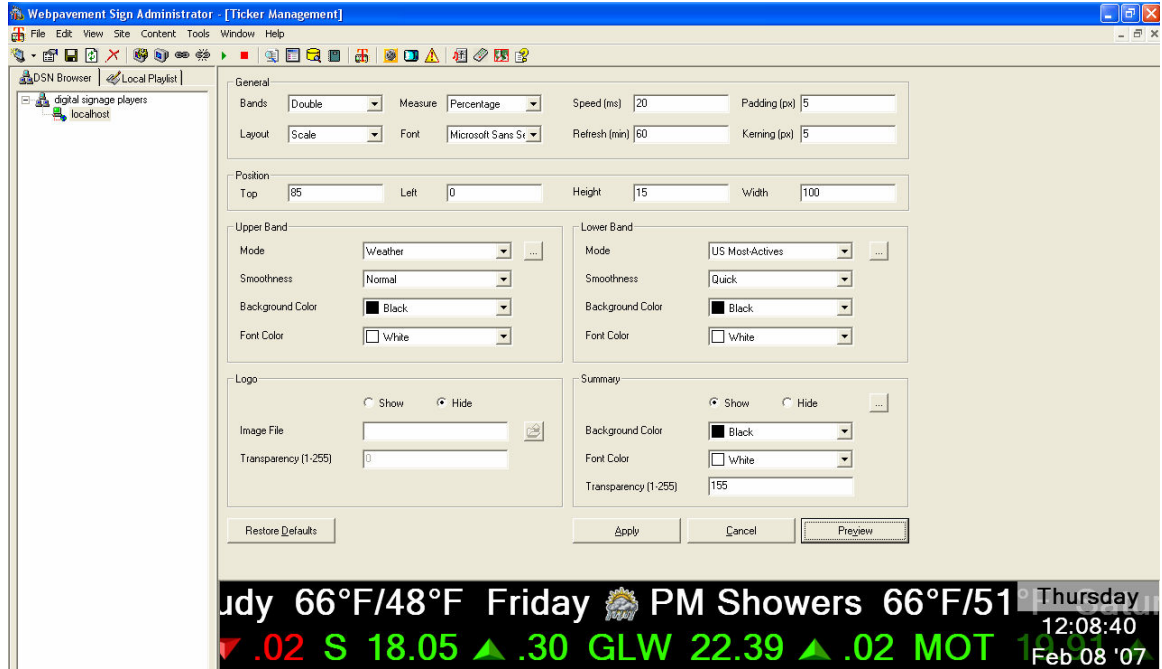
Remove Ticker

Select a sign  [sign name] or a sign group  [group name]
Connect to the sign or sign group by clicking the connect icon  From the menu options, select Content Select Remove Ticker

Ticker Management Detailed Instructions

Tip: not all system fonts work properly with the ticker.

Use the ticker preview to test your chosen font.



Ticker Preview: the ticker preview will not reflect many of the settings (for example, the logo that is on the remote media player will not display in the ticker preview window).

NEW RSS Feeds: the ticker can display RSS data. You can do this by selecting Message/Data Feeds in the Mode. Next select RSS - then enter the RSS feed location.

Ticker Settings Explained:

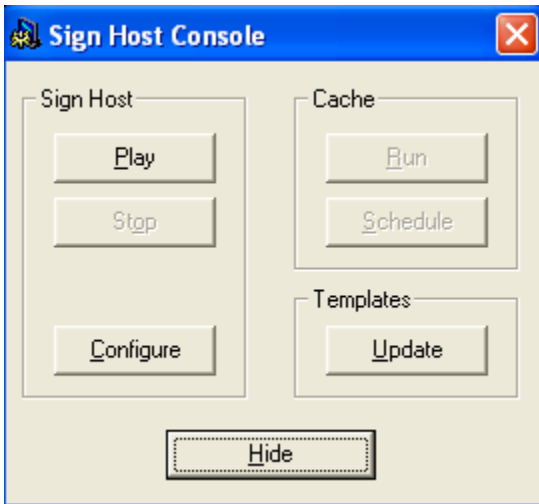
Ticker Category:	Ticker Setting:	Description:
General	Bands	Choose how many ticker bands you would like.
	Measure	Indicates whether the ticker position should measure as a percentage of the screen or actual pixels.
	Speed	Indicates how fast the ticker will scroll. The lower the value, the faster the scroll. (results may vary for different processors)
	Padding	Indicates the spacing above and below the ticker text
	Layout	Indicates if the ticker should overlay on top of content <or> scale the content without overlay.
	Font	Set your ticker font
	Refresh	Indicates how often the ticker should obtain new data for stocks, weather and news
	Kerning	Indicates the spacing between ticker text or image separators
Position	Top	Position from the top of the screen
	Left	Position from the left side of the screen
	Height	Ticker Height
	Width	Ticker Width
Upper / Lower Band	Mode	Choose a data source for display. (upper and lower must be different sources)
	Smoothness	Use this to adjust the smoothness of the crawling text.
	Bgrnd Color	Ticker band background color
	Font Color	Ticker font color
Logo	Show / Hide	Show or hide the logo bug on the left side of the ticker
	Image File	Upload your company or sponsor logo for display
	Transparency	Determines how transparent the logo should appear in the ticker

Setting a Side Bar (aka. Infopanel)

Setting the side bar infopanel is very common for digital signage. Webpavement offers weather side panels or RSS side panels.

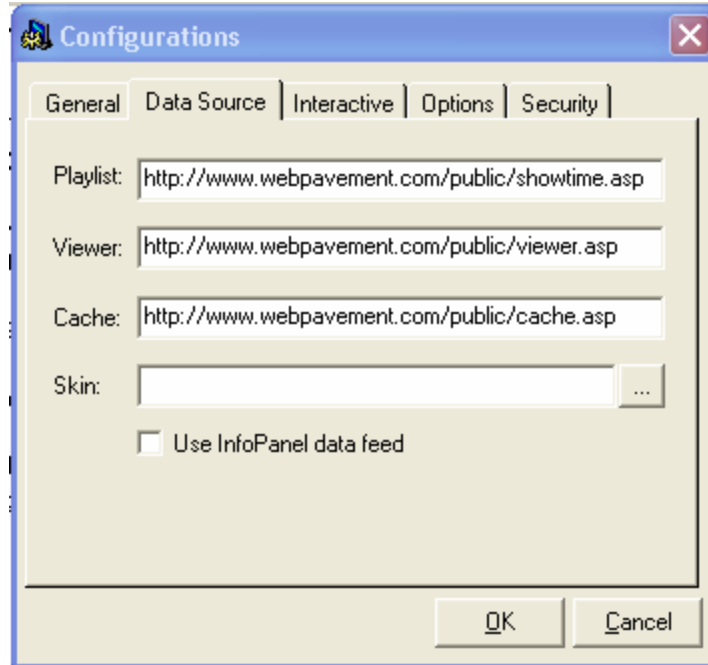
Getting the Side Panel Templates:

1. Go into your Sign Host Console
2. Click the Update Templates button



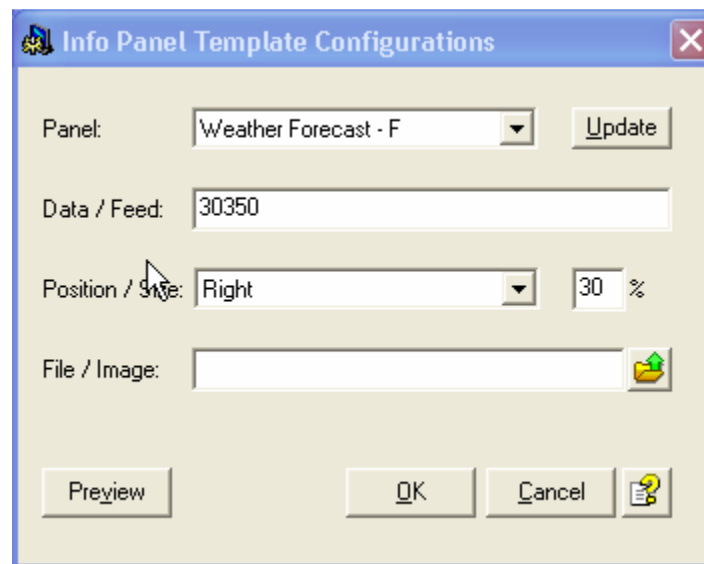
Setting the Side Panel:

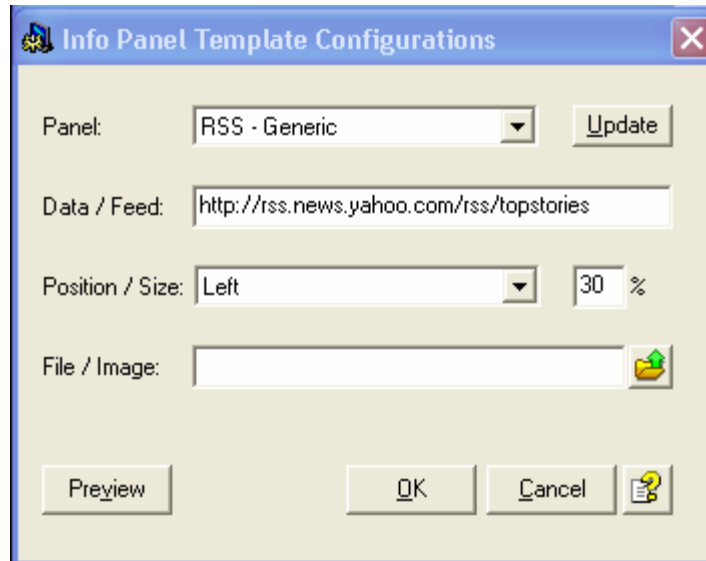
1. Close the Sign Host window that is currently displaying on your media player.
2. Open the Sign Host Console that is running in your System Tray
3. Go to the data source tab



4. A "Skin" can be specified to frame your content and customize the screen layout - enter the location of your skin if you have a custom skin you would like to use

5. Check the Use InfoPanel data feed then click the button next to the skin text field
 -- Check this box and click the edit data icon to use a Webpavement InfoPanel template

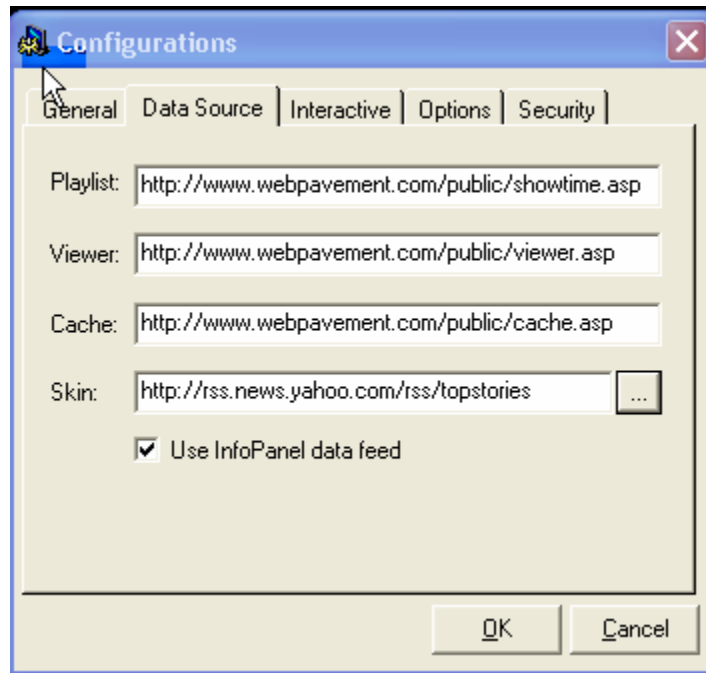




6. Info Panel Template Configurations:

- (1) Click the update button to retrieve the latest template updates from Webpavement
- (2) There are currently 3 Info Panel templates that can be used with Sign Host - Weather forecast - F, Weather forecast - C, and RSS - Generic
- (3) Panel: Select the template to use
- (4) Data/Feed: enter zip code(s) separated by commas for weather <OR> enter url for RSS feed
- (5) Position: Select the position for your Info Panel - left or right
- (6) Size: Set the size to be used by Info Panel measured as a percentage of screen resolution
- (7) File/Image: if desired, specify the location of a flash file or image file for placement on Info Panel

Note: The Data Source tab entries will be updated with your selections from Info Panel configuration.



7. Click OK, Hide - then click PLAY