



Netkey Smart Control

USER MANUAL

Smart Control Overview	3
Smart Control Installation	4
Smart Control Configuration.....	5
Smart Control Operations	6
Opening the Smart Control Program.....	6
Setting Your Display Device.....	7
Update your device list	9
Creating Scheduled tasks for RS-232 commands.....	10

Smart Control Overview

Netkey Smart Control is device management software compatible with any Audio Visual product including Plasma's, LCD's, Projectors, Televisions, Video Switches and more.

Smart Control is comparable to having your device's remote-control installed on your computer. Features such as Turn On / Off, switch video sources, change channels and setting volume levels are standard functionality.

Smart Control can function from remote locations using TCP/IP or function using a direct connection to the display device.

Smart Control Installation

Install Smart Control on the computer running Netkey Sign Administrator <or> on the computer that will be directly connected to the display device.

Requirements:

- Windows 2000 Professional, XP, Vista
- Must log in using the Windows administrator account

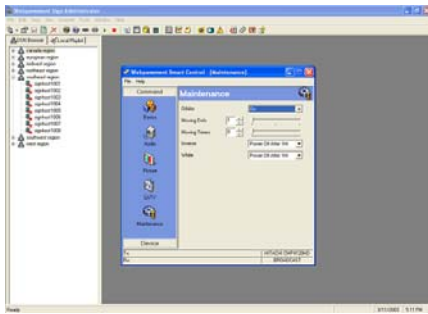
Step by Step:

1. Login to Windows with the Windows administrator account
2. Run smartcontrolsetup.exe:
3. When the installation is completed, a reboot is recommended
4. You can access the program from 2 locations:
 - Smart Control icon on the desktop
 - Clicking Start Button, Programs, Netkey SignOS, Smart Control

Smart Control Configuration

Please understand the way you will configure your smart control.

TCP/IP Config Option 1: integrated with Netkey Sign Host for controlling devices over TCP/IP.



Pictured: Sign Administrator Running Smart Control

Pictured: Sign Host Media Player



Config Option 1: integrated with Sign Administrator by connecting To Sign Host media players.



use com2 serial connection or
use com1 serial connection

Local Config Option 2: install using a stand-alone computer with a serial cable connected to your device.



Pictured: Smart Control

use com port serial connection







Config Option 2: computer has a direct serial connection to the plasma

Smart Control Operations

Opening the Smart Control Program

From Sign Administrator:

1. Select a sign  [sign name]
2. Connect to the sign by clicking the connect icon 
3. You will know you're connected by the green light 
4. Click the smart control icon 
5. Most commands needed for digital signage are listed.
Select the command that you would like to send to the display

Note: commands are sent in real-time and will occur immediately on the display

Smart Control Stand Alone:

1. Use the Smart Control icon  on the desktop
2. Click the Start Button, Programs, Netkey SignOS, Smart Control

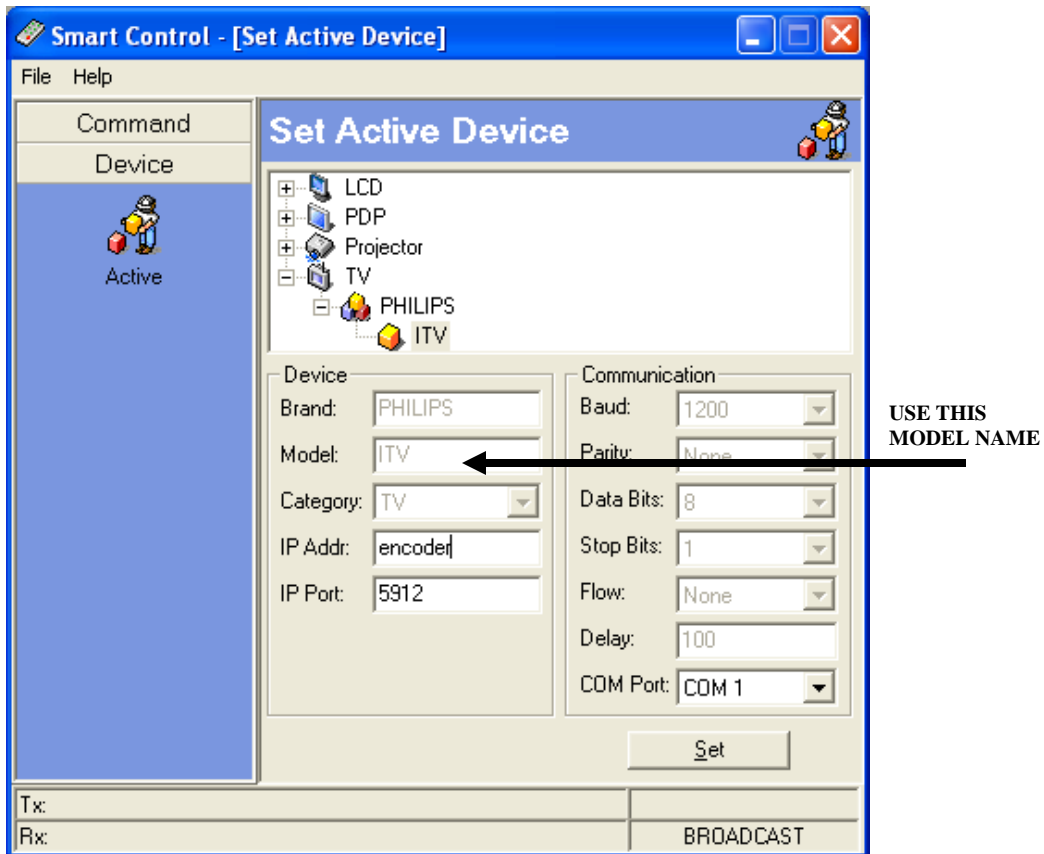
Setting Your Display Device

From Sign Administrator:

1. Open the Sign Administrator program
2. Select a Sign from your digital signage network tree, then click properties
3. Click the device tab
4. Enter the model number of the plasma display or device. This will ensure that every time you control this sign, the active device will be remembered.

Note: This device name must match exactly to the XML device list file. You can revise this info at a later time if you don't know the exact device name in the XML. The exact device name can be located as indicated in the diagram below.

5. Click OK
6. Next, open Smart Control
7. Click Device from the tabs on the left
8. Click the Active Icon
9. Select your device from the list
10. Select the appropriate com port
11. Enter the Sign Host media player's IP Address
(required for remote control)
12. Click Set
13. Click the command tab on the left: now all the commands are available for use

**Smart Control Stand Alone:**

1. Open Smart Control
2. Click Device from the tabs on the left
3. Click the Active Icon
4. Select your device from the list
5. Select the appropriate com port
6. Click Set
7. Click the command tab on the left: now all the commands are available for use

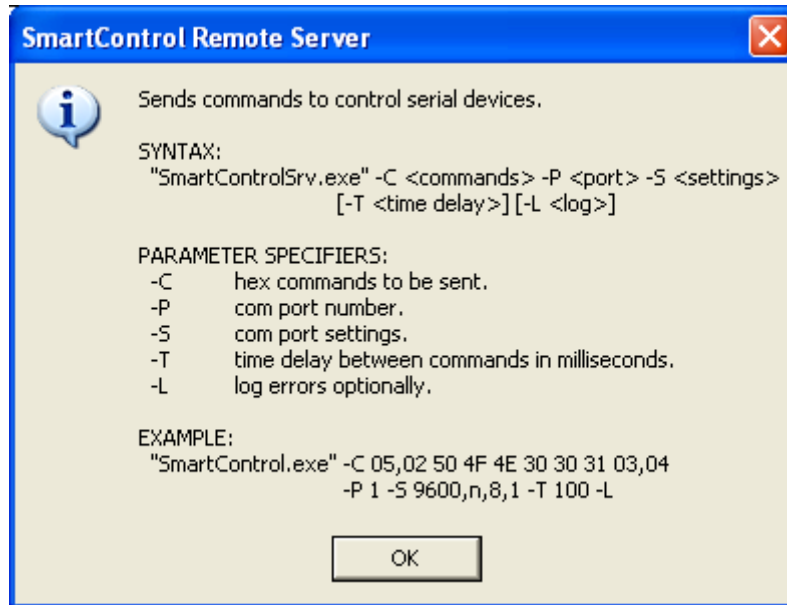
Update your device list

Smart Control is designed to support all manufacturer devices. Devices and commands are stored in an updateable XML file for your convenience. Click the update device list link to download the latest devices or edit the XML file to add devices yourself.

1. Open Smart Control
2. Click File, Update device list
3. The updated device lists (syntax source xml) are stored at <http://www.webpavement.com/downloads/syn.xml>
4. Click update

Note: if your device is not listed, please contact Netkey to add your device. We will need the Model and RS-232 commands. If you are technically savvy, you may edit the XML with your device commands.

Creating Scheduled tasks for RS-232 commands.



Example: "power on Panasonic plasma" using windows 2000 / xp

1. open control panel, scheduled tasks
2. double click add scheduled task
3. browse to the c:\program files\Netkey SignOS\Sign Host directory and choose SmartControlSrv.exe
4. name this task "Panasonic Power On"
5. set your schedule to your requirements (exclude weekends?)
6. finish creating the scheduled task
7. open the scheduled task
8. in the run text box, after the final quote of the file path, paste the following info:

```
-C 02 50 4F 4E 03 -P 1 -S 9600,N,8,1
```

the end result should look like this:

```
" c:\program files\Netkey SignOS\Sign Host\SmartControlSrv.exe" -C  
02 50 4F 4E 03 -P 1 -S 9600,N,8,1
```

9. set the correct password for executing

Tip: you can right click the scheduled task, then select run to test whether or not it's functioning properly.

Tip: you must create a separate scheduled task for every command.