

Installation Guide – Webpavement Kiosk



Webpavement Kiosk software is used for running public internet access terminals (kiosks). Give kiosk users access to the web and email while away from the office.

Webpavement Kiosk is a simple low-cost alternative to high-priced kiosk packages. Kiosk software that's easy to install and configure - can be implemented in minutes. A reliable solution with all the features needed for unattended management of kiosks.

Webpavement Kiosk will lock down your keyboard and let you specify the sites the intended user(s) can access.

This document will guide you through the Webpavement Kiosk installation. It will also assist you in configuring your kiosk.

Best Regards

-- The Webpavement Customer Service Team --

Installation Step 1: Install Webpavement Kiosk (computer running the kiosk)

Requirements:

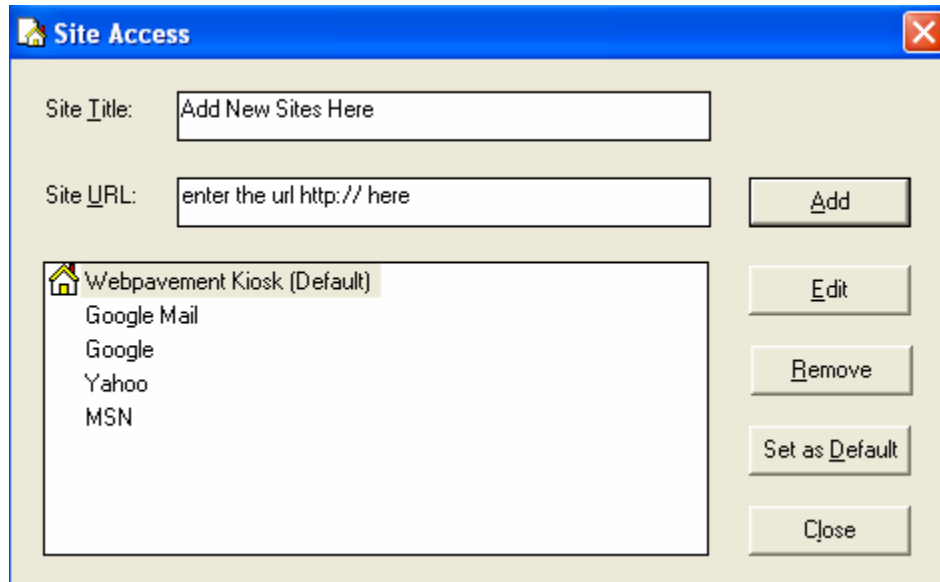
- Windows 2000 or XP
- Internet Explorer 5.0 or above
- TCP/IP (network connection is required)

Step by Step:

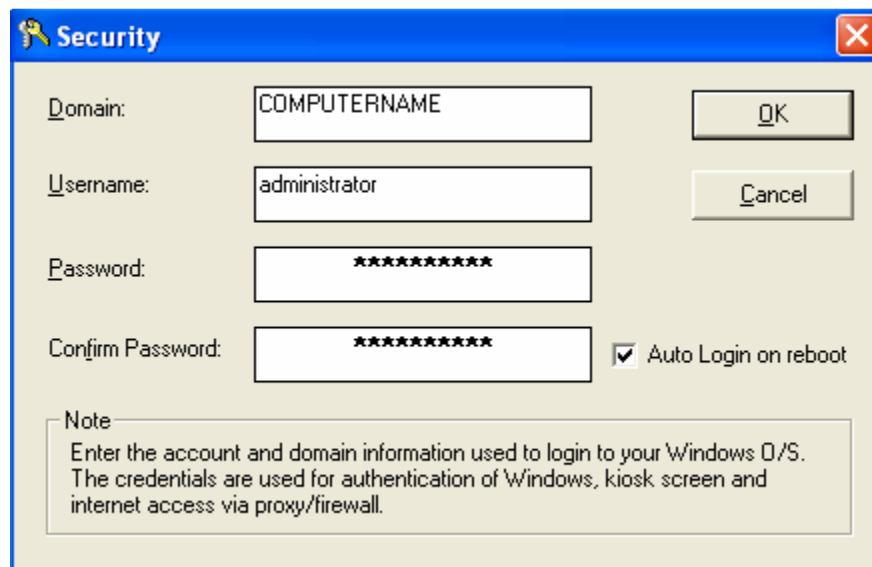
1. Login to Windows with your common or known user account
2. Run Webpavement Kiosk setup file
3. Open the Kiosk application (located on the desktop or from programs)

Configuration items:

- From the tools menu option, select Site Access:
 - Add, Change, Delete Sites the user can access
 - Set one of your web sites as the home page (Default)

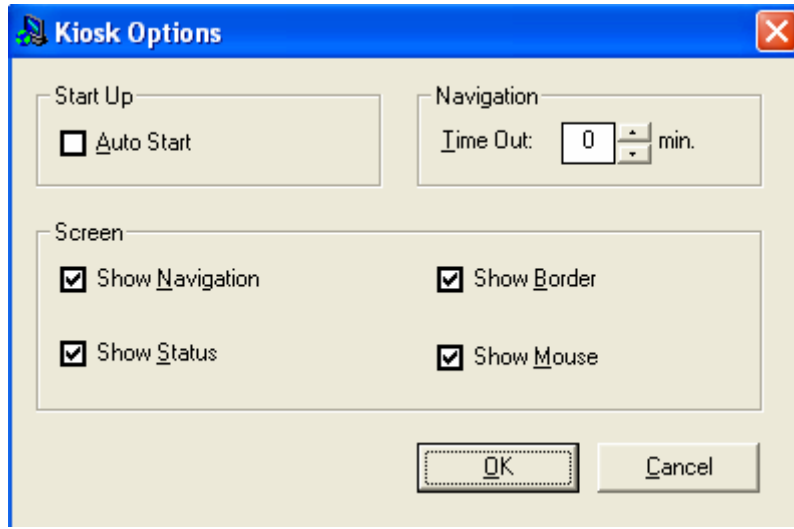


- From the tools menu option, select Kiosk Options:



- The information provided here must match the Windows user credentials. The password entered here is also the password used to unlock the kiosk.
- Remember to set the kiosk password – the password is blank by default
- When the program is running in protected kiosk mode, the administrative options are accessible by using the F11 key – a password must be entered

- From the tools menu option, select Kiosk Options:



- Auto start kiosk will start the kiosk (in protected kiosk mode) on login or reboot
 - Navigation Time Out is the amount of time for returning to the default (home) page. Enter 0 to disable the time out mode.
 - Show Navigation will enable buttons for navigation.
 - Show Border will enable a browser window border
 - Show Status will show the status of the web page download, the date and the time
 - Show mouse will give the user a mouse pointer
- From the tools menu option, select Internet Options:
 - Use these properties for miscellaneous kiosk features including proxy servers and security

Now you can open the kiosk. If you enabled autostart, you can reboot your computer and the kiosk will be opened in protected mode.

Use the F11 key to go back to un-protected mode by entering the password. To return to protected mode, use the F11 key again.